

speedtouch™

SpeedTouch™ 585(v6)

Residential ADSL Gateway



Installation and Setup Guide



A THOMSON BRAND

SpeedTouch™

585_(v6)

Installation and Setup Guide

Copyright

Copyright ©1999-2006 THOMSON. All rights reserved.

Distribution and copying of this document, use and communication of its contents is not permitted without written authorization from THOMSON. The content of this document is furnished for informational use only, may be subject to change without notice, and should not be construed as a commitment by THOMSON. THOMSON assumes no responsibility or liability for any errors or inaccuracies that may appear in this document.

Thomson Telecom Belgium
Prins Boudewijnlaan, 47
B-2650 Edegem
Belgium

www.speedtouch.com

Trademarks

The following trademarks are used in this document:

- ▶ SpeedTouch™ is a trademark of THOMSON.
- ▶ DECT is a trademark of ETSI.
- ▶ Bluetooth® word mark and logos are owned by the Bluetooth SIG, Inc.
- ▶ Ethernet™ is a trademark of Xerox Corporation.
- ▶ Wi-Fi® and the Wi-Fi logo are registered trademarks of the Wi-Fi Alliance. "Wi-Fi CERTIFIED", "Wi-Fi ZONE", "Wi-Fi Alliance", their respective logos and "Wi-Fi Protected Access" are trademarks of the Wi-Fi Alliance.
- ▶ UPnP™ is a certification mark of the UPnP™ Implementers Corporation.
- ▶ Microsoft®, MS-DOS®, Windows® and Windows NT® are either registered trademarks or trademarks of Microsoft Corporation in the United States and/or other countries.
- ▶ Apple® and Mac OS® are registered trademarks of Apple Computer, Incorporated, registered in the United States and other countries.
- ▶ UNIX® is a registered trademark of UNIX System Laboratories, Incorporated.
- ▶ Adobe®, the Adobe logo, Acrobat and Acrobat Reader are trademarks or registered trademarks of Adobe Systems, Incorporated, registered in the United States and/or other countries.
- ▶ Netscape® and Netscape Navigator® are registered trademarks of Netscape Communications Corporation.

Other brands and product names may be trademarks or registered trademarks of their respective holders.

Document Information

Status: v1.0 (April 2006)

Reference: E-DOC-CTC-20051017-0093

Short Title: Installation and Setup Guide ST585_(v6) R6.1 (en)

Contents

About this Installation and Setup Guide	1
--	----------

1 Introducing the SpeedTouch™	3
--	----------

2 Basic Installation	5
2.1 Mounting your SpeedTouch™	6
2.2 Installing your SpeedTouch™	7
2.2.1 Guided Installation.....	8
2.2.2 Manual Installation	17
2.3 The SpeedTouch™ Setup CD.....	19
2.4 SpeedTouch™ Connection Essentials	20
2.5 Connections Overview and Powering	21
2.5.1 Wireless Setup	22
2.6 Basic Security	23

3 Web-Based User Interface.....	25
--	-----------

4 Troubleshooting.....	27
4.1 Checking the Hardware.....	28
4.2 LED Diagnostics	29
4.3 Web Diagnostics	31

4.4	SpeedTouch™ Setup CD Troubleshooting	33
4.5	Wireless Setup Troubleshooting	36
4.6	Easy Setup Troubleshooting	37
4.7	Reset to Factory Defaults	38

About this Installation and Setup Guide

Used symbols

The following symbols are used in this Installation and Setup Guide:



A **note** provides additional information about a topic.



A **tip** provides an alternative method or shortcut to perform an action.



A **caution** warns you about potential problems or specific precautions that need to be taken.

Terminology

Generally, the SpeedTouch™585_(v6)(i) will be referred to as SpeedTouch™ in this Installation and Setup Guide.

Documentation and software updates

THOMSON continuously develops new solutions, but is also committed to improve its existing products.

For suggestions regarding this document, please contact documentation.speedtouch@thomson.net.

For more information on THOMSON's latest technological innovations, documents and software releases, visit us at: www.speedtouch.com.

1 Introducing the SpeedTouch™

Introduction

In a minute you will be able to access the Internet using your SpeedTouch™ Residential ADSL Gateway.

This Installation and Setup Guide will show you how to set up your SpeedTouch™ and how to connect a computer or a local area network (LAN) to the Internet.

Identifying your SpeedTouch™

The label on the bottom of your SpeedTouch™ informs you about the SpeedTouch™'s:

- ▶ Product name
- ▶ Model number
- ▶ Serial number
- ▶ Power requirements



Do not remove or cover the label.

DSL variants

The SpeedTouch™ comes in two ADSL variants:

- ▶ POTS: The SpeedTouch™585_(v6) connects to an analogue Plain Old Telephone Service (POTS) line.
- ▶ ISDN: The SpeedTouch™585_(v6) connects to an Integrated Service Digital Network (ISDN) line, enabling residences with an ISDN line to use the ADSL service.

The ... variant	supports ...
POTS	ADSL
	ADSL2
	ADSL2+
	RE-ADSL
ISDN	ADSL
	ADSL2
	ADSL2+

You can easily identify your variant by checking the product name printed on the label on the bottom of your SpeedTouch™.



Only use the SpeedTouch™ variant which is appropriate for the DSL service provided to your premises.

SpeedTouch™ Setup CD

Your SpeedTouch™ comes with a Setup CD.

If you insert the CD into a Microsoft Windows PC or Mac OS X computer:

- ▶ The first time, an intuitive SpeedTouch™ Quick-Install Wizard will guide you through the hardware setup of your SpeedTouch™ and will help you to connect to the Internet.
See “2.2 Installing your SpeedTouch™” on page 7 for more information.
- ▶ For future reference, the SpeedTouch™ CD Menu provides links to all contents
See “2.3 The SpeedTouch™ Setup CD” on page 19 for more information.

SpeedTouch™ Home Install Wizard

The SpeedTouch™ Home Install Wizard has been designed to help you on the Internet very quickly.

First, the wizard tries to detect your SpeedTouch™. As soon as you have connected your SpeedTouch™ to your computer, the wizard configures your SpeedTouch™ and - if necessary - your computer.

The Home Install Wizard was designed for Microsoft Windows operating systems and Mac OS X - in the latter case provided you use a wired connection to your SpeedTouch™.

You can start the SpeedTouch™ Home Install Wizard:

- ▶ Automatically from the SpeedTouch™ Quick Install Wizard when you insert the SpeedTouch™ Setup CD into a computer for the first time.
See “2.2 Installing your SpeedTouch™” on page 7 for more information.
- ▶ From the SpeedTouch™ CD Menu **Home** page, via **Run Quick Installation**. This will in fact re-run the Quick-Install Wizard and subsequently start the Home Install Wizard as if you started the Setup CD for the first time.
- ▶ From the SpeedTouch™ CD Menu **Maintenance** page, via **Reconfigure my SpeedTouch™**.



If you do not want to use the guided installation procedure, you can also install and configure your SpeedTouch™ manually. See “2.2.2 Manual Installation” on page 17 for more information.

2 Basic Installation

Before you begin Make sure you read the safety instructions and regulatory notices first. You can find the safety instructions on the Setup CD (see "2.2 Installing your SpeedTouch™" on page 7). They may also be provided as a printed booklet.

ADSL service The ADSL service must be up and running on your telephone line.
If both conventional telephone and ADSL service are simultaneously available from the same copper pair, you will need a central splitter or distributed filters for decoupling ADSL and telephone signals.



Public telephone lines carry voltages that can cause electric shock. Only try to set up splitter/filters that have been designed to be installed by unqualified personnel. For further assistance, contact your Internet Service Provider.

Computer requirements

- ▶ To connect computer(s) via Ethernet, make sure the computer(s) are equipped with an Ethernet network interface card (NIC).
- ▶ For wireless networking, you will need a wireless 802.11 b/g compatible client adapter for each computer you intend to connect wirelessly.

Wireless client adapters You can use one of the following wireless client adapters:

- ▶ SpeedTouch™110g CardBus
- ▶ SpeedTouch™121g USB adapter
- ▶ Any other Wi-Fi certified WLAN client

Internet connection details You need the following connection details from your Internet Service Provider (ISP):

- ▶ Your ISP's method for connecting to the Internet (for example PPPoE)
- ▶ The VPI/VCI (for example 8/35)
- ▶ Your user name and password to connect to the Internet

You must have received this information when you subscribed to DSL at your Internet Service Provider (ISP). You will be prompted for this information at a given step in the installation procedure.

2.1 Mounting your SpeedTouch™

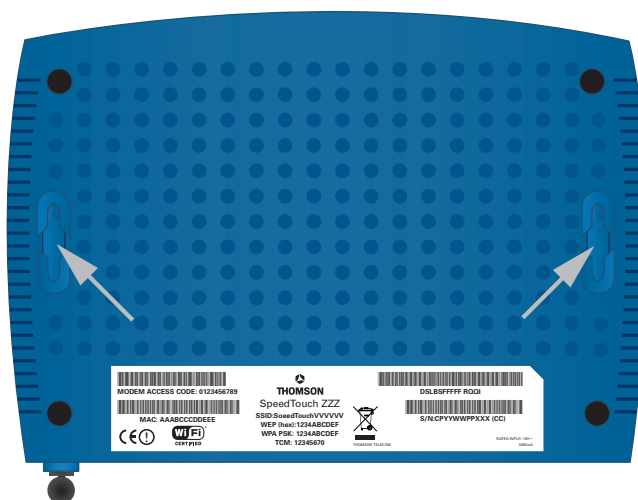
Setup possibilities

You can mount the SpeedTouch™ on a wall, set it up upright or simply place it on a desk.

Wall mount

Proceed as follows to mount the SpeedTouch™ on a wall or other vertical surface:

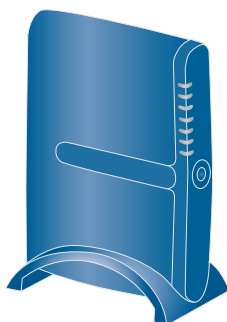
- 1 Drill two holes in the wall or other vertical surface where you want to place the SpeedTouch™.
- 2 Fasten two screws in the wall holes. The screws should protrude five millimetres from the surface of the wall.
- 3 Attach your SpeedTouch™ on the wall using the two mounting slots on the bottom.



If you install the SpeedTouch™ onto plasterboard, use dowels to secure the screws. Otherwise the strain of the cables connected to the SpeedTouch™ rear panel connectors could pull the SpeedTouch™ from the wall.

Stand-up

To set up the SpeedTouch™ in an upright position, use the cradle (if available).



2.2 Installing your SpeedTouch™

Internet connectivity setup

There are different ways to set up your SpeedTouch™. The best way depends on your operating system.

If you use the following operating system	the recommended way to set up your SpeedTouch™ is
Microsoft Windows (98 SE, Millennium, 2000 or XP)	the Home Install Wizard, as described in "2.2.1 Guided Installation" on page 8.
Mac OS X, provided you use a wired connection to your SpeedTouch™	
Any operating system (provided you have IP connectivity)	the Easy Setup, as described in "2.2.2 Manual Installation" on page 17.
Mac OS X, wirelessly connected to your SpeedTouch™ and provided you have IP connectivity	



If you are using Microsoft Windows XP, you can also use the Microsoft Windows XP Internet Gateway Device (IGD) Control Agent for UPnP, as described in the SpeedTouch™ User's Guide.

2.2.1 Guided Installation

Introduction

On the CD, a Quick-Install Wizard is provided that will guide you through the first installation and setup of your SpeedTouch™.

The Quick-Install Wizard will:

- ▶ Provide important safety and regulatory information.
- ▶ Show you how to make the necessary connections to your SpeedTouch™.
- ▶ Show you how to turn on your device.
- ▶ Prepare you to smoothly run the SpeedTouch™ Home Install Wizard.

The subsequent SpeedTouch™ Home Install Wizard will then prepare your SpeedTouch™ and your local computer(s) to connect to the Internet.

The Home Install Wizard will:

- ▶ Guide you through connecting your computer(s) to your SpeedTouch™.
- ▶ Prepare the SpeedTouch™ to connect to the Internet.



You need administrative rights to run the applications on the Setup CD on a Microsoft Windows 2000 or XP operating system, or Mac OS X computer.

Connecting the cables: wait!

Do not plug in any cables until you are prompted to do so by the SpeedTouch™ Quick-Install Wizard and/or the SpeedTouch™ Home Install Wizard.

Starting the CD for the first time

To start the SpeedTouch™ Setup CD Menu:

1 Insert the Setup CD into your computer's CD-ROM or DVD-ROM drive.

- ▶ Microsoft Windows: The CD should autostart.



If not, see "The SpeedTouch™ CD does not start automatically" on page 33.

- ▶ Mac OS X: Double-click **Menu** in the window with the content of the CD.

2 Select the language of your choice and click **OK**.

3 The procedure continues with the SpeedTouch™ Quick-Install Wizard.

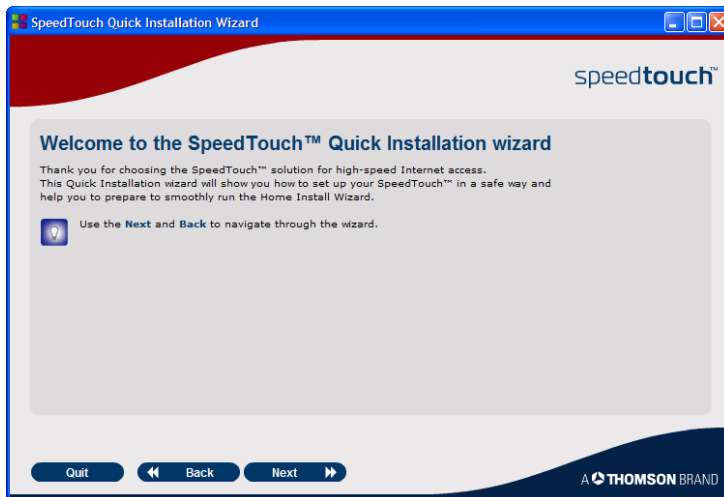
Proceed with "Quick-Install Wizard" on page 9.

Quick-Install Wizard

The SpeedTouch™ Quick-Install Wizard guides you through the first setup of your SpeedTouch™.

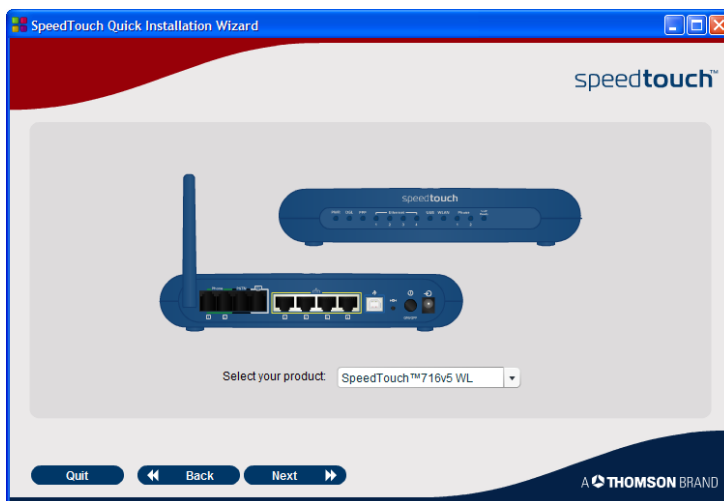
Proceed as follows:

- 1 On the **Welcome** page, click **Next** to continue.



If you ran the CD on this computer before, the Quick-Install Wizard is not shown; the CD menu appears instead (see “2.3 The SpeedTouch™ Setup CD” on page 19 for more information).

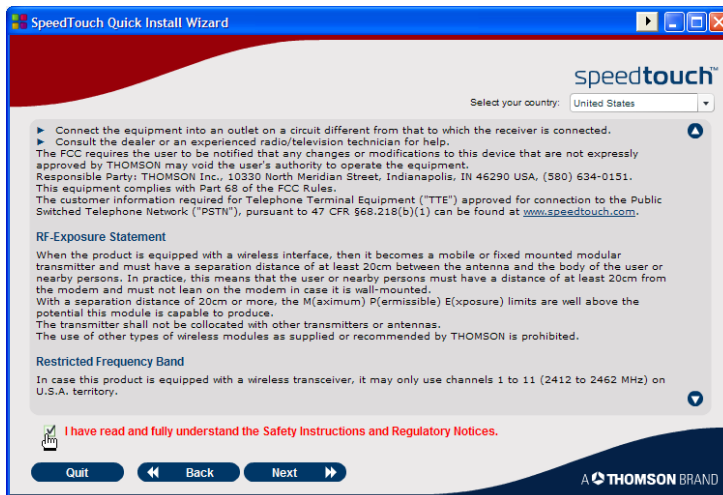
- 2 Select your SpeedTouch™ from the list of supported devices and click **Next**.



A product picture helps you to easily identify your SpeedTouch™. If you are not sure what device you have, check the label on the bottom of your SpeedTouch™.

The SpeedTouch™ Safety Instructions and Regulatory Notices are displayed.

- 3 Scroll down and read all the instructions carefully, select **I have read and I fully understand the Safety Instructions and Regulatory Information** to confirm your reading, and then click **Next**.



Your SpeedTouch™ is designed and tested to meet the latest safety standards. However, to ensure safe use of this product, it is important that you carefully read and comply with the Safety Instructions and Regulatory Notices shown and/or available in the Safety and Regulatory booklet before you install the SpeedTouch™.

- 4 Subsequent screens guide you through the preliminary hardware setup of your SpeedTouch™.

Follow all the instructions carefully and click **Next** each time you are ready to proceed.

As soon as all the required preliminary connections to your SpeedTouch™ have been made, and your SpeedTouch™ is turned on and initialized, the final steps in the Quick-Install Wizard will:

- ▶ Make all information readily available to let the Home Install Wizard configure your SpeedTouch™ to connect to the Internet. See “Internet connection details” on page 5 for an overview of information you must have readily available.
- ▶ Start the SpeedTouch™ Home Install Wizard.

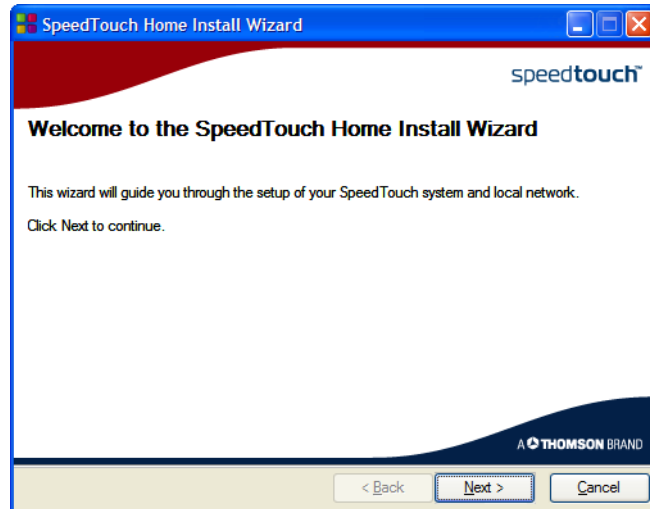
- 5 Click **Set up my SpeedTouch** to continue.

- 6 The procedure continues with the SpeedTouch™ Home Install Wizard. Proceed with “Home Install Wizard” on page 11.

Home Install Wizard

The SpeedTouch™ Home Install Wizard guides you through your local network connections and prepares the SpeedTouch™ to connect to the Internet. Proceed as follows:

- 1 On the **Welcome** page, click **Next** to continue.



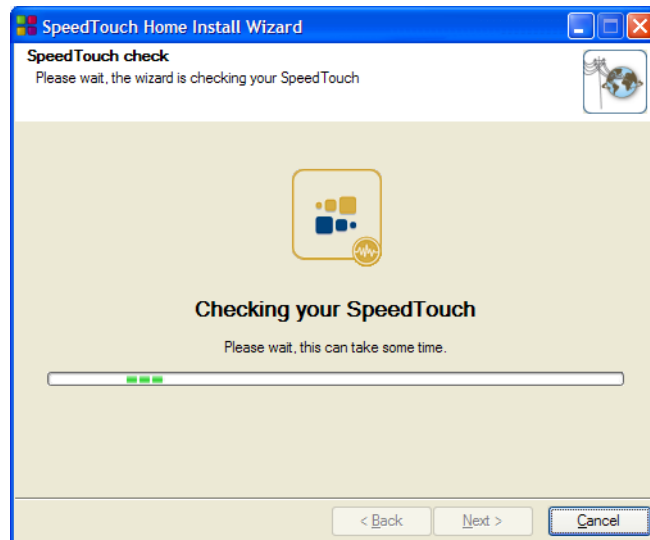
The **Software License Agreement** window appears.

- 2 You must accept before continuing. Click **Yes** to accept.



If you accepted the Software License Agreement in a previous configuration setup, this window will not be shown.

The SpeedTouch™ Home Install Wizard checks your system and invites you to connect the SpeedTouch™ to your computer.



See "SpeedTouch™ wiring" on page 20 for a comprehensive overview of all SpeedTouch™ connections.

- 3** Make one of the following connections:
- ▶ Connect the yellow RJ-45 Ethernet cable to the yellow (indicated) Ethernet port on your SpeedTouch™ and the other end to the computer's Ethernet port.
 - ▶ For wireless networking, plug a wireless card or adapter into your computer.



In case of problems or for advanced information, see "2.5.1 Wireless Setup" on page 22.

- 4** Once the hardware is installed and connected to the SpeedTouch™, the procedure continues with configuring your Internet connection.



If the wizard does not detect a connection, an error message will be displayed. Refer to "The wizard does not detect a connection" on page 33.

Proceed with "Configuring the Internet connection" on page 13.

Configuring the Internet connection

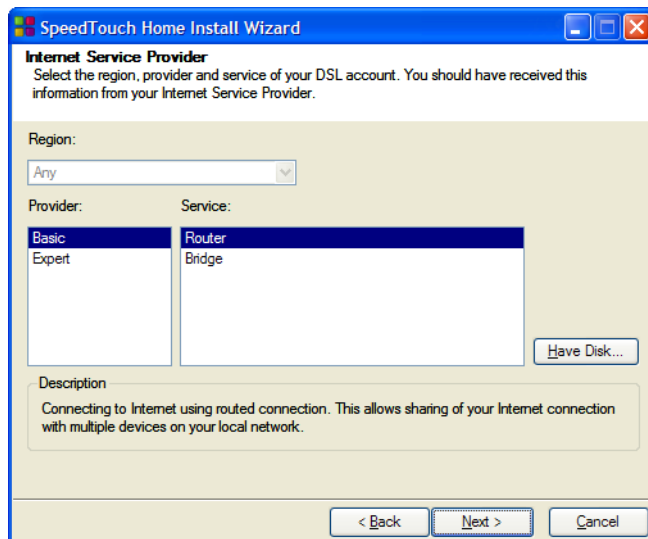
Proceed as follows:

- 1 If prompted, enter the **User name** and **Password** for your SpeedTouch™ security settings and click **OK**.



The factory default user is 'Administrator' and its password is blank. It is advisable to specify another user name and password during the configuration procedure to protect your SpeedTouch™ from security violation. See "2.6 Basic Security" on page 23 for more information.

- 2 Select the appropriate **Region**, **Provider** and **Service** for your Internet connection as specified by your Internet Service Provider and click **Next**.



If the Internet Service Provider has included a separate disk with a dedicated service profile, click **Have Disk** to browse to the location of the appropriate service profile template file.



From here on, the procedure might differ from the description below. The requested information will depend on the selected service profile and should be provided by your Internet Service Provider. Subsequent screens will guide you through the configuration of both the SpeedTouch™ and your computer. Enter the requested information and click **Next** whenever requested.

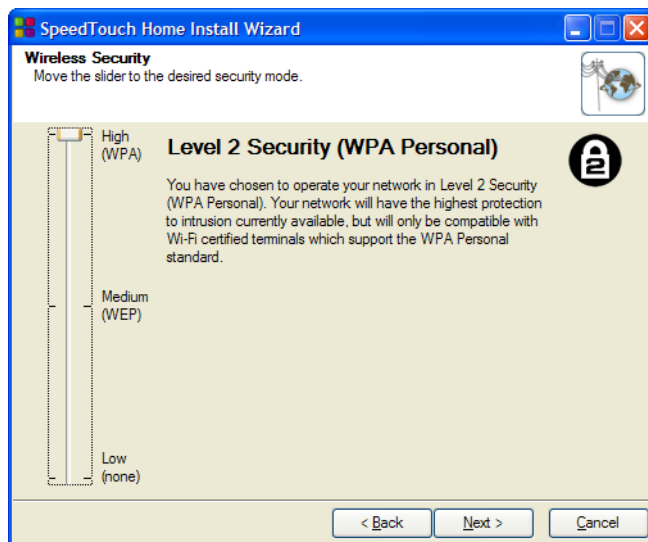
- 3 Your connection to the Internet connectivity is set up:
 - ▶ Select the **VPI/VCI** - and, if required, the **Connection Type** - as specified by your Internet Service Provider and click **Next**.
 - ▶ Enter the **User Name** and **Password** for your Internet account settings as specified by your Internet Service Provider and click **Next**.
- 4 The procedure continues with some additional configurations.

Proceed with "Configuring the SpeedTouch™ (and your computer)" on page 14.

Configuring the
SpeedTouch™ (and
your computer)

Proceed as follows:

- 1 Depending on the selected service profile and your ISP's requirements, you may have to fill in some additional settings during the Home Install Wizard, like Dynamic DNS Service, Time Configuration or other. Enter the information provided by your ISP and click **Next** whenever requested.
- 2 To protect the wireless connections to your SpeedTouch™, move the slide control to the desired security mode.



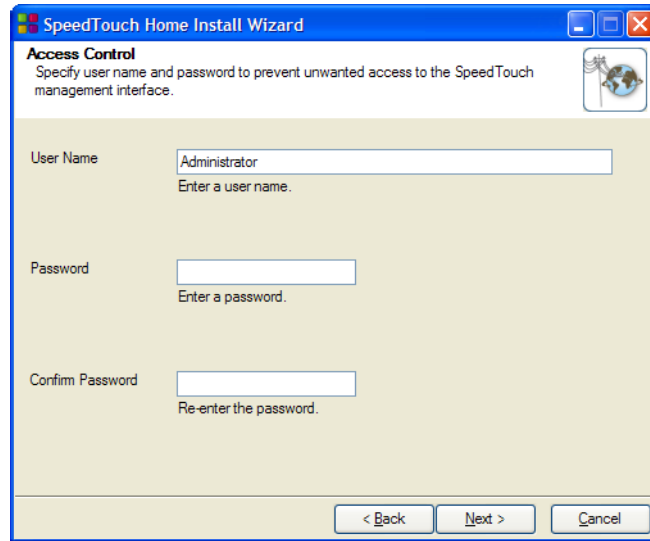
The following security modes to secure traffic between the SpeedTouch™ and connected wireless stations are available:

- ▶ **Low**, which implies in fact that no security measures are taken at all.
- ▶ **Medium**, implying that traffic is encrypted by means of a static encryption key (WEP).
- ▶ **High**, providing the highest security standard available (WPA) for encrypting all wireless traffic.



For an overview of all SpeedTouch™ wireless security features, see "Securing your wireless network" on page 23.

- 3 Provide a user name and password to protect your SpeedTouch™ from unauthorised access. Each time a user wants to access a SpeedTouch™ management interface, the user will be prompted to provide this user name and password before access is granted.



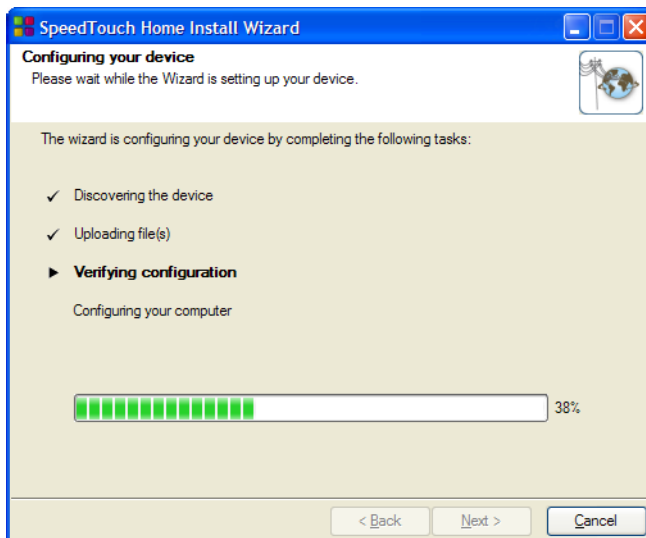
Click **Next** to continue.

- 4 The procedure continues with the final steps of configuring your SpeedTouch™ and your computer.
Proceed with “ Finishing the Home Install Wizard” on page 16.

Finishing the Home Install Wizard

The SpeedTouch™ Home Install Wizard will configure the SpeedTouch™ and your computer according to the service profile. Proceed as follows:

- 1 You can follow the configuration progress in following window:



- 2 Click **Finish** to close the wizard.

The following steps will happen automatically:

- ▶ After some seconds, the Internet LED on your SpeedTouch™ will be lit green to indicate Internet connectivity. If not, refer to “4.2 LED Diagnostics” on page 29. If needed, you can test your Internet connection as described in “Testing your Internet Connection” on page 31.
- ▶ The SpeedTouch™ CD Menu is displayed. See “2.3 The SpeedTouch™ Setup CD” on page 19 for more information.
- ▶ You are redirected to the embedded SpeedTouch™ pages automatically (unless you cleared the **http://speedtouch.lan** check box in the last window of the Home Install Wizard). These pages allow you to configure the SpeedTouch™ firewall, SpeedTouch™ settings, your wireless access point settings, and so on. See the SpeedTouch™ User’s Guide for more information.

More on IP settings

The computer’s networking interface used during the Home Install Wizard procedure will be configured for obtaining its IP configuration dynamically in the most cases. This is the most convenient configuration and should not be changed.



For fixed or advanced IP configurations, please follow the instructions of your ISP.



2.2.2 Manual Installation

Web-based Easy Setup

With the help of the Easy Setup, your Internet connection is set up in a few clicks. The Easy Setup is Operating System independent.

Preconditions

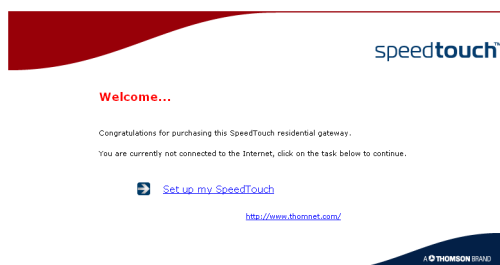
Make sure that:

- ▶ Your SpeedTouch™ is correctly set up and turned on.
- ▶ Your computer is connected to the SpeedTouch™. In case of a wireless connection, a wireless client adapter has to be installed on your computer and correctly configured to connect to your SpeedTouch™.
 -  See “ SpeedTouch™ wiring” on page 20 for a comprehensive overview of all SpeedTouch™ connections.
- ▶ Your host computer is configured as DHCP client or with a valid fixed IP address. For more information, refer to the Help of your browser.
 -  In case of problems, you can give the host computer a fixed IP address in the same subnet as your SpeedTouch™ (If the SpeedTouch™ is in its default settings, that is an address between 192.168.1.1 and 192.168.1.253). In case you use fixed IP addresses, the SpeedTouch™ has to be configured as DNS server.
- ▶ Your Web browser is not using a proxy server. For more information, see “ Disable proxy server” on page 37.

HTTP intercept

Proceed as follows:

- 1** Open a Web browser. Browse to an arbitrary Web site, for instance <http://www.speedtouch.com>. As long as no Internet connection has been set up, you will be automatically redirected to the SpeedTouch™ **Welcome** page.



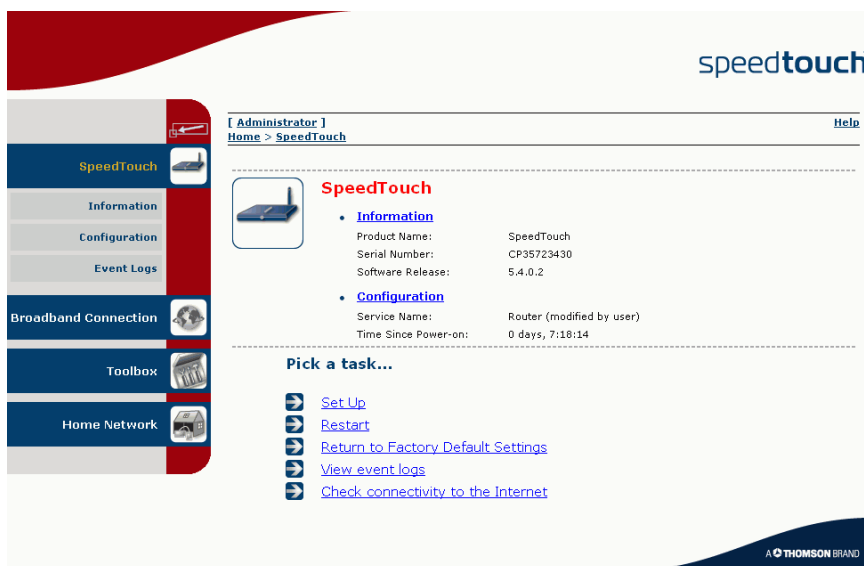
If you are not redirected automatically, go to “ Starting the Easy Setup wizard” on page 18.

- 2** Click **Set up my SpeedTouch** to start the Easy Setup wizard.
- 3** Proceed with “ Using Easy Setup” on page 18.

Starting the Easy Setup wizard

You can also start the Easy Setup wizard from within the embedded Web pages. Proceed as follows:


- 1 Browse to the SpeedTouch™ pages on <http://speedtouch.lan> or on its IP address, 192.168.1.254 by default).
- 2 In the menu, click **SpeedTouch**.



- 3 In the **Pick a task** list, click **Set Up**.

Using Easy Setup

In the Easy Setup wizard:

- 1 Click **Next** to proceed. If for some reason you want to abort the wizard, click **Cancel**.
- 2 Choose the **Service** provided by your ISP (Router or Bridge) and click **Next**.
- 3 Select the appropriate **VPI/VCI** - and, if required, the **Connection Type** (PPPoE or PPPoA) - provided by your ISP, and then click **Next**.
- 4 For a Routed service, fill in the Internet Account settings (**PPP user name** and **password**) provided by your ISP, and then click **Next**.
- 5 Fill in the SpeedTouch™ **Security user name** and **Password**.
 The factory default user is 'Administrator' and its password is blank. It is advisable to specify another Administrator user name and password to protect your SpeedTouch™ from security violation, as described in "2.6 Basic Security" on page 23.
- 6 In the next window you can review your settings, before starting the configuration of your SpeedTouch™. If something is missing or incorrect, click **Back**. To confirm your settings, click **Start**.
- 7 Wait until the configuration is finished, and then click **Finish**.

2.3 The SpeedTouch™ Setup CD

SpeedTouch™ Setup CD

Your SpeedTouch™ comes with a Setup CD. If you insert the Setup CD into a Microsoft Windows PC or Mac OS X computer, an intuitive CD Menu guides you through the features and contents of the Setup CD and allows you to easily browse for user documentation, SpeedTouch™ system software, service templates, etc.

SpeedTouch™ CD menu

The SpeedTouch™ CD menu appears automatically each time you insert the CD, or after running the Quick-Install Wizard and subsequent Home Install Wizard:



Select:

- ▶ **Run Quick Installation** to start the SpeedTouch™ Quick-Install Wizard and SpeedTouch™ Home Install Wizard.
- ▶ **SpeedTouch Maintenance** to:
 - ▶ Reconfigure your SpeedTouch™ via the Home Install Wizard.
 - ▶ Check for SpeedTouch™ software upgrades.
- ▶ **Documentation and Help** to:
 - ▶ Consult user documentation for your SpeedTouch™ DSL Gateway.
 - ▶ Consult user documentation for SpeedTouch™ networking products.
 - ▶ See more information on SpeedTouch™ products and solutions.

If you connect to the Internet, the document list will automatically be updated with the latest documentation.

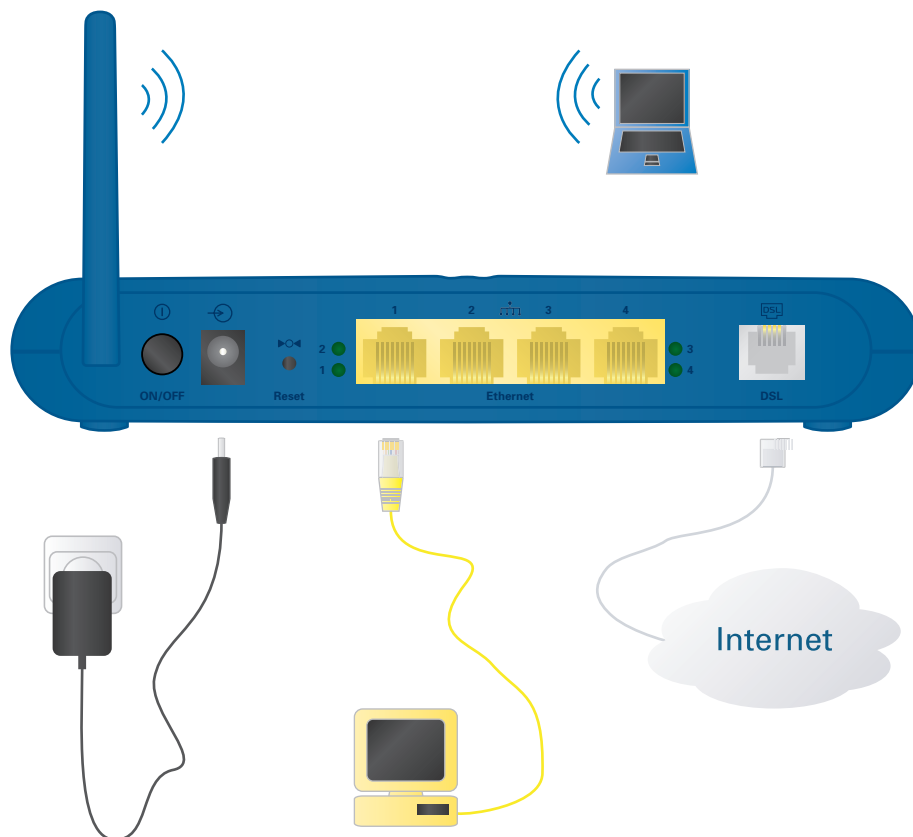


If you have problems viewing the SpeedTouch™ documentation, see “ I cannot view the SpeedTouch™ documentation” on page 34.

- ▶ **Visit the SpeedTouch DSL Site** to visit the online support sections on www.speedtouch.com.
- ▶ **View CD Contents** to open a new window to view the Setup CD contents.

2.4 SpeedTouch™ Connection Essentials

SpeedTouch™ wiring The image below shows all possible types of connection to the SpeedTouch™.



The colour coded printing on the backpanel of your SpeedTouch™ will facilitate matching the colour coded cables.

Making connections

In most cases, the SpeedTouch™ Quick-Install Wizard and Home Install Wizard will guide you through the process of making all the required connections to your SpeedTouch™.



It is recommended to wait to make any of these connections until the wizard prompts you to do so. See “2.2 Installing your SpeedTouch™” on page 7 for more information.

If you want to make the required connections yourself, see “2.5 Connections Overview and Powering” on page 21 for more information.

2.5 Connections Overview and Powering

Introduction If you want to make the required connections yourself without using the guided installation procedure as recommended, you must:

- ▶ Read the safety instructions and regulatory notices first.



You can find the safety instructions on the Setup CD (see "2.2 Installing your SpeedTouch™" on page 7). They may also be provided as a printed booklet.

- ▶ Follow the order as indicated below.

DSL connection Use the grey DSL cable to connect the SpeedTouch™ DSL port to your telephone wall outlet or distributed filter.

Powering the SpeedTouch™

Plug the coaxial jack of the electric power supply adapter into the SpeedTouch™ power inlet port and the other end into the wall outlet.



The SpeedTouch™ electrical power requirements are indicated on the label on the bottom side of your SpeedTouch™. In case you need to use another power supply than the one provided, make sure that the spare supply complies with the SpeedTouch™ power requirements.

To turn on the SpeedTouch™, press the power button on the SpeedTouch™ rear panel.

During the start-up procedure, the power LED on the front panel is lit red for some seconds. As soon as the power LED is solidly lit green, your SpeedTouch™ is ready for service. After another couple of seconds, also the DSL LED will light green.

If these LEDs do not light, please refer to "Checking the LEDs" on page 29. A comprehensive LED overview can be found in the SpeedTouch™ User's Guide.

Use the same button to turn off your SpeedTouch™.

Network connections Your SpeedTouch™ allows you to connect your computer(s) via:

- ▶ Ethernet
- ▶ Wireless networking



It is recommended to use the Guided Installation procedure. See "2.2.1 Guided Installation" on page 8 for more information.

2.5.1 Wireless Setup

Wireless client adapters

If you want a wireless connection to your Wi-Fi certified SpeedTouch™, you need a wireless 802.11 b/g compatible client adapter.

You can use one of the following wireless client adapters:

- ▶ SpeedTouch™110g CardBus
- ▶ SpeedTouch™121g USB adapter
- ▶ Any other Wi-Fi certified WLAN client
- ▶ A built-in Wi-Fi certified WLAN adapter, if present in your computer



To install hardware on a Microsoft Windows 2000 or a Microsoft Windows XP operating system, you need administrative rights on your computer.

Installing your wireless client adapter

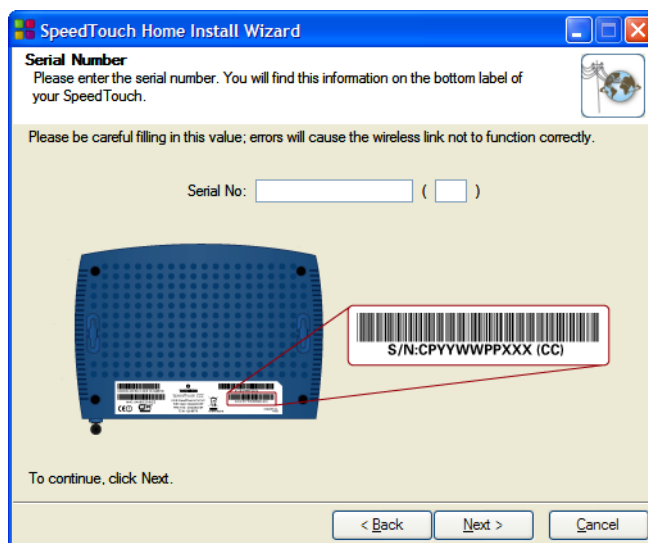
Proceed as follows when the Home Install Wizard prompts you to plug in the wireless client adapter:

- 1 Plug in the wireless client adapter. The hardware is being installed.



If you use a SpeedTouch™ wireless networking adapter, the SpeedTouch™ Wireless Client Manager, an alternative to the Wireless Zero Configuration (WZC) in Windows XP, will be installed. If you are working on Windows XP and prefer to work with the WZC, see "Restoring Windows Zero Configuration" on page 36 to switch back to WZC.

- 2 Enter your SpeedTouch™'s serial number and click **Next**.



Your SpeedTouch™'s serial number is a 13-digit key printed on the bottom label of your SpeedTouch™.

A progress window appears, showing the setup of the wireless connection to your SpeedTouch™.

- 3 Continue with "Configuring the Internet connection" on page 13.

2.6 Basic Security

Default user name and password

The SpeedTouch™ comes with a default user. Its user name is 'Administrator' and the default password is blank.

Changing your password

For security reasons, it is recommended to set a password to access the SpeedTouch™. Proceed as follows:

- 1** Go to the SpeedTouch™ home page (<http://speedtouch.lan> or 192.168.1.254).
- 2** In the left pane, choose **Toolbox > User Management**.
- 3** In the **Pick a task** list, click **Change my password**.
- 4** Enter a new password and confirm.



Do not forget this logon information or you will be forced to reset the SpeedTouch™ back to its default configuration.

Default wireless security settings

Also for wireless connections to your SpeedTouch™, by default there are no security settings, so the SpeedTouch™ is initially accessible to all wireless devices:

- ▶ The Network Name (SSID) is broadcast.
- ▶ The security level is initially set to Low (that is: no encryption is used).
- ▶ The Access Control List (ACL) is open and empty. New stations are automatically allowed to access the SpeedTouch™.

It is recommended to change these SpeedTouch™ wireless access point settings either automatically via the SpeedTouch™ Home Install Wizard, either manually as described in the SpeedTouch™ User's Guide.

Securing your wireless network

To secure your wireless network, you can:

- 1** Turn off the broadcast of the wireless Network Name (SSID). New wireless clients that are scanning for available networks will not see your network appear in their list.
- 2** Encrypt the data that will be sent over the wireless network. You can choose different encryption methods or levels of security:
 - ▶ **High:** Wi-Fi Protected Access Pre-Shared Key (WPA-PSK) encryption, the highest form of security available. This can only be used if your wireless client and client manager support it.
 - ▶ **Medium:** Wired-Equivalent Privacy (WEP) encryption.
 - ▶ **Low:** no encryption, no security.



For more information, see the SpeedTouch™ User's Guide.

- 3** Allow or deny access based on the MAC address of the wireless client(s). Known MAC addresses are kept in the Access Control List (ACL). If the SpeedTouch™ is configured to allow new stations via registration, unknown computers will have to register before they can connect.



For the ACL you have the following options:

- ▶ **Allowed (automatically):** All new stations can access the SpeedTouch™.
- ▶ **Allowed (via registration):** Only allowed stations in the ACL have access. You can add new stations via the Association / Registration button.
- ▶ **Not allowed:** Only allowed stations in the ACL have access.

3 Web-Based User Interface

Embedded pages The SpeedTouch™ comes with embedded web pages, providing an interface to the software installed on the device. It allows easy setup and management of the SpeedTouch™ via your Web browser from any PC connected to the SpeedTouch™.

Access Proceed as follows to access the pages:

- 1** Open your Web browser.



The recommended screen resolution is 1024 by 768 pixels.

- 2** In the address bar, type <http://speedtouch.lan> or your SpeedTouch™'s IP address (192.168.1.254 by default) and press ENTER.

- 3** Enter your SpeedTouch™ security user name and password.



The default user name is 'Administrator' and the default password is blank.

- 4** The SpeedTouch™'s home page will be displayed in your browser. From here - depending on the rights of your user account - you have access to the other pages.

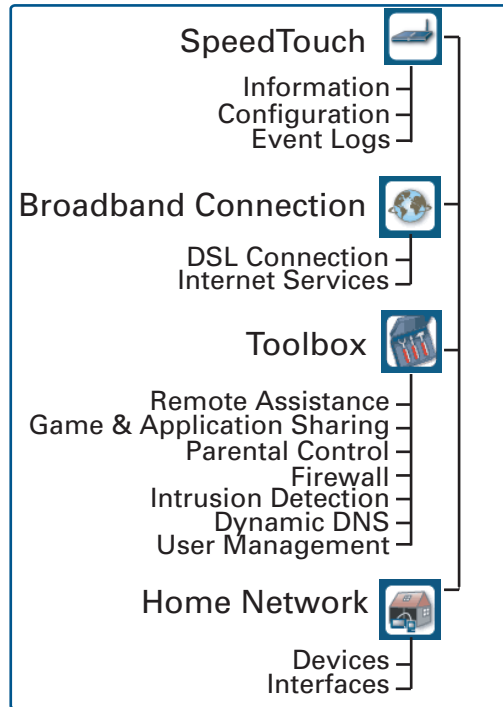
Tasks Among others, you can:

- ▶ View the SpeedTouch™'s current settings and status.
- ▶ Configure the SpeedTouch™ to connect to your Service Provider with the settings provided.
- ▶ Set the SpeedTouch™'s firewall to work with specific applications.
- ▶ Set up security features.
- ▶ Enable remote management access.
- ▶ Back up your configuration settings.
- ▶ Reset the SpeedTouch™'s default settings.
- ▶ Update the SpeedTouch™'s software.

Using the Web pages When making changes to the SpeedTouch™ configuration via the Web pages, the configuration is stored automatically whenever you click **Apply**.

For more information on the embedded pages, refer to the **Help** in the upper right corner of the notification and navigation area or refer to the SpeedTouch™ User's Guide.

Site Map The following Site Map gives you an overview of the main pages:



4 Troubleshooting

What to check The first things to check if you cannot access the Internet, are:

- ▶ Power
- ▶ Hardware connections
- ▶ LEDs

Configuration problems

In case your SpeedTouch™ is unreachable due to misconfiguration, you might consider a hardware reset to factory defaults as described in “4.7 Reset to Factory Defaults” on page 38.



However, note that resetting the SpeedTouch™ to its factory settings will revoke all the changes you made to the configuration.

If the suggestions in this chapter do not resolve the Internet connection problem, please contact your Internet Service Provider.

4.1 Checking the Hardware

Check the wiring

Plug in properly all the cables you need. Make sure that the cables between your SpeedTouch™, computers and telephone socket are plugged in firmly. Loose connections can affect your Internet connection.

Damaged cables can interfere with your Internet connection. Check for damage along the cables and loose connections at the end of the cable. Replace any damaged cables.

Test the telephone line

To eliminate the possibility of a fault with the telephone line itself, check for a dialling tone by using a telephone connected to the telephone master socket.

If you are using ADSL, check whether a splitter has been installed or that micro-filters have been correctly fitted.

Contact your telephone company if there is no dialling tone.

Restart your computer

Loss of Internet or network connectivity may be caused by the computer. Restarting your computer may solve the problem.

Power-cycle the SpeedTouch™

To restart your SpeedTouch™, simply turn it off. Wait five seconds and turn it back on.

4.2 LED Diagnostics

Checking the LEDs

After establishing a connection with the Internet, at least the following LEDs should solidly light green: Power, DSL, Internet.

LED status	Possible solutions
No LEDs are lit	<p>The SpeedTouch™ is not turned on, or turned off.</p> <ul style="list-style-type: none"> ▶ Make sure the SpeedTouch™ is plugged into an electrical outlet. ▶ Make sure you are using the correct power supply for your SpeedTouch™. The SpeedTouch™ electrical power requirements are indicated on the label on the bottom of your SpeedTouch™. ▶ Make sure the SpeedTouch™ is turned on. ▶ Unplug the SpeedTouch™, restart your computer and then plug the SpeedTouch™ back in.
Power LED is lit red or flashing amber	<p>The SpeedTouch™ is malfunctioning or not able to start up.</p> <ul style="list-style-type: none"> ▶ Fully unplug the SpeedTouch™ from your computer and disconnect it from its power supply. Wait five seconds, connect the SpeedTouch™ again and turn it back on.
DSL LED is flashing green or no DSL LED	<p>Your DSL service is unable to synchronise.</p> <ul style="list-style-type: none"> ▶ Make sure the SpeedTouch™ is plugged into the DSL-enabled phone line. ▶ Make sure micro-filters are correctly fitted (if not, it is very likely that your regular telephone service is not working properly). ▶ Make sure you have the correct SpeedTouch™ variant (ISDN or POTS) according the DSL/phone service provided to your premises. ▶ If you have previously had a working connection, call your ISP to check for service outages.
No Ethernet LED No Ethernet port's Link Integrity/ Activity LED	<p>No Ethernet connectivity:</p> <ul style="list-style-type: none"> ▶ Make sure the Ethernet cable(s) are firmly connected to the 10/100Base-T port. ▶ Make sure you are using the correct cable type for your Ethernet equipment. ▶ Make sure the Ethernet NIC driver is correctly installed and enabled on your computer. Power safe options for the Ethernet NIC should preferably be disabled.

LED status	Possible solutions
WLAN LED is flashing or not lit	<ul style="list-style-type: none"> ▶ The WLAN LED flashes if there is wireless LAN activity and can have different colours: <ul style="list-style-type: none"> ▶ Green: The SpeedTouch™ wireless access point is operating in the highest security mode (WPA). Make sure to use the same WPA encryption on the WLAN client. ▶ Amber: The SpeedTouch™ wireless access point is operating in medium security mode (WEP). Make sure to use the same WEP encryption on the WLAN client. ▶ Red: The SpeedTouch™ wireless access point uses no security. ▶ The WLAN LED is not lit if the SpeedTouch™ wireless access point is disabled. For wireless networking, make sure the WLAN is enabled on the SpeedTouch™. Proceed as follows: <ol style="list-style-type: none"> 1 Go to the SpeedTouch™ Web pages. 2 In the menu select Home Network > Interfaces. 3 Click WLAN. 4 Click Configure. 5 Select Interface Enabled. <p>- OR -</p> <ol style="list-style-type: none"> 1 Press and hold the Association / Registration button until the WLAN LED is lit (green, amber or red). 2 The WLAN LED is toggling between red and green: If new stations are only allowed via registration and if you pressed the Association / Registration button, the ACL will be unlocked for 30 seconds during which you can connect new wireless clients.
Red Internet LED or No Internet LED	<ul style="list-style-type: none"> ▶ There was an authentication failure. This will usually present itself as an error message regarding an incorrect password. <ul style="list-style-type: none"> ▶ Check whether your user name is correct. For ADSL connections, the user name is normally in the form of username@ISP. ▶ Check whether your password is correctly entered. The password is case sensitive. <p>If you continue to get password failures, contact your ISP.</p> ▶ The wrong service profile was selected. Restart the setup of your SpeedTouch™, and make sure to select the correct service profile.

You can find a comprehensive LED overview in the SpeedTouch™ User's Guide.

4.3 Web Diagnostics

Testing your Internet Connection







After setting up the Internet connection, there is an easy way to check whether your configuration is fine. Proceed as follows:



- 1** Go to the SpeedTouch™ home page (<http://speedtouch.lan> or 192.168.1.254).
- 2** In the Menu, click **SpeedTouch**.
- 3** In the **Pick a task** list, click **Check connectivity to the Internet**.
- 4** In the **Internet Service to Check** box, select the Internet service you want to check.
- 5** Click **Check Connectivity**.

If the test is successful, you will see a list of green check marks as shown in the example below:



Internet Service to Check: ▼



• Test Results

	DSL
	ATM
	Ethernet
	PPP
	IP
	Internet

 Connectivity to Gateway (101.101.101.1)
 Connectivity to DNS Server 1 (10.50.2.20)

Otherwise a red cross will help you to diagnose the problem:

Test result	Explanation
 DSL	Your DSL line is not synchronised. <ul style="list-style-type: none"> ▶ Check whether your telephone line is correctly connected to your SpeedTouch™. ▶ Check the DSL LED, as described in "Checking the LEDs" on page 29.
 ATM	No ATM activity detected on your DSL line.

Test result	Explanation
 Ethernet	<p>No Ethernet activity.</p> <p>If you are connected through a protocol other than PPPoE, this check is not applicable as the result will always be 'No Ethernet activity'.</p>
 PPP	<ul style="list-style-type: none"> ▶ Authentication failed: check your user name and password. The user name is in most cases in the form of username@ISP. ▶ Your connection is disconnected. ▶ Could not bring up link.
No IP	No IP address or no DNS server has been configured. During IP address negotiation, there was an IPCP error or a DHCP error.
No Internet	This test sends 1 ping to each address of a configured list of IP addresses. The test succeeds if all addresses can be reached. If your primary and secondary DNS server are part of the list, reaching one of both is enough.
No DNS	The DNS service provided by your ISP may have a problem.

4.4 SpeedTouch™ Setup CD Troubleshooting

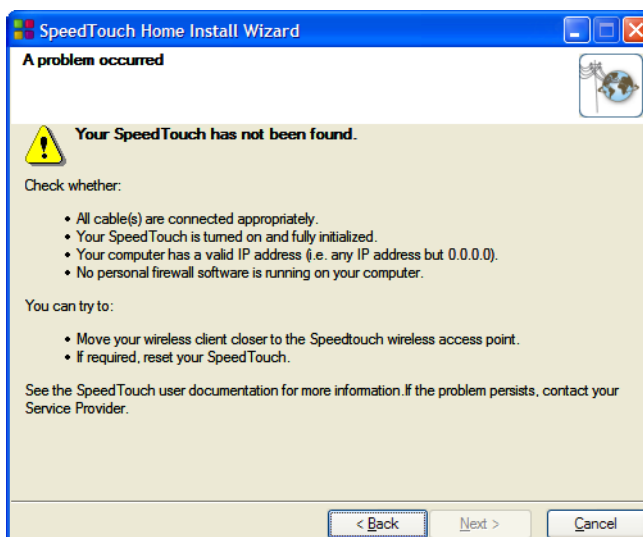
The SpeedTouch™ CD does not start automatically

Proceed as follows:

- ▶ In Microsoft Windows:
 - 1 In the Windows task bar, click the **Start** button.
 - 2 Select **Run**.
 - 3 In the **Open** field, enter the following path: **D:\Setup.exe**, where D stands for the drive letter of your CD-ROM drive.
- ▶ In Mac OS X:
 - 1 On your desktop, double-click the CD icon.
 - 2 Double-click **Menu**.

The wizard does not detect a connection

If the Home Install Wizard does not detect a connection to your SpeedTouch™, an error window appears.



If this is the case, check whether:

- ▶ The SpeedTouch™ is turned on and fully initialised.
- ▶ Your computer has a valid IP address, that is any address but 0.0.0.0.
 - ▶ In Microsoft Windows:
 - 1 In the taskbar, click the **Start** button.
 - 2 Select **Run**.
 - 3 In the **Open** field, type **cmd**.
 - 4 Click **OK**.





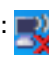
A black window will appear with a flashing cursor.

 - 5 Type **ipconfig /all** and press ENTER.



In Microsoft Windows 98 or Microsoft Windows Millennium, type **winipcfg** and then press ENTER.

Your IP address is displayed.

- ▶ In Mac OS X:
 - 1 Go to **Dock > System Preferences**.
 - 2 Click **Network**.
 - 3 Click the **TCP/IP** tab.
Your IP address is displayed.
- ▶ No dedicated firewall device or router is placed between your computer and the SpeedTouch™.
- ▶ No personal network security software (for example firewall software) is running on your computer.
- ▶ Your computer is correctly connected to the SpeedTouch™, or the WLAN client is correctly associated with the SpeedTouch™.
 - 1 In the Windows XP notification area, click the Wireless Network Connection icon  or the SpeedTouch™ Client Manager icon .
.
 If you are not connected, this icon will have a red cross: .
 - 2 Check whether the displayed network has your SpeedTouch™ network name (SSID).

To repeat the search for your SpeedTouch™, click **Back** or restart the wizard. As soon as the wizard finds your SpeedTouch™, you can continue with “[Configuring the SpeedTouch™ \(and your computer\)](#)” on page 14.

The SpeedTouch™ is not responding

If the completion window does not appear after running the SpeedTouch™ Home Install Wizard, this means that the SpeedTouch™ is not responding or not accessible anymore.

There are two possibilities:

- ▶ This might be due to the reconfiguration of the SpeedTouch™’s IP settings or wireless access point settings. In this case, the last window of the Home Install Wizard will not be shown. Your SpeedTouch™ is correctly set up though and you will be able to surf the Internet.
- ▶ If you did not reconfigure the SpeedTouch™’s IP settings or wireless access point settings, restart the Home Install Wizard.



If the setup fails over a wireless connection, try to set up your SpeedTouch™ using a wired connection.

If the problem persists, refer to the Service Provider’s instructions for more information.

I cannot view the SpeedTouch™ documentation

To be able to view the SpeedTouch™ documentation pages on the Setup CD, JavaScript must be enabled in your Web browser. For more information, refer to the **Help** of your Web browser.


To allow active content on a Microsoft Windows XP system, see “[I get a warning about active content in Internet Explorer](#)” on page 35.

I get a warning about active content in Internet Explorer

When opening documentation pages from the Setup CD, a warning might be displayed. This may be the case when the pages are opened in Internet Explorer and you are using Microsoft Windows XP with Service Pack 2.

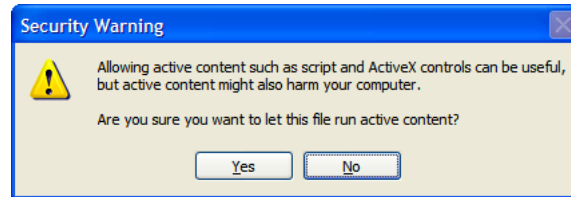
Proceed as follows to view the documentation:

- 1 In Internet Explorer, the following message will appear in the Information Bar:

 To help protect your security, Internet Explorer has restricted this file from showing active content that could access your computer. Click here for options...

- 2 Click the Information Bar (with the warning).
- 3 Select **Allow Blocked Content**.

A security warning is displayed:



- 4 Click **Yes**.

You can now view or print the SpeedTouch™ documentation pages.



This warning will be displayed every time you consult the documentation. If you do not want this message to be shown in the future, you must allow CDs to run active content on your computer:

- 1 In the Internet Explorer menu, select **Tools > Internet Options**.
- 2 Click the **Advanced** tab.
- 3 Under **Security**, select **Allow active content from CDs to run on My Computer**.

4.5 Wireless Setup Troubleshooting

Restoring Windows Zero Configuration

When you install a SpeedTouch™ networking product, the SpeedTouch™ Client Manager is also installed. The SpeedTouch™ Client Manager is an alternative to the Windows Zero Configuration (WZC) in Windows XP. In many cases the SpeedTouch™ Client Manager will disable the WZC.



You need administrative privileges on your computer to restore the WZC service.

For information about starting the WZC service, visit the Microsoft knowledge base on <http://support.microsoft.com>.

Removing the SpeedTouch™ Wireless Client Manager

Every time you reconnect to a WLAN, the SpeedTouch™ Wireless Client Manager start, forcing the WZC to go down.

Proceed as follows to remove the SpeedTouch™ Wireless Client Manager:

- 1** In the Windows XP taskbar, click **Start**.
- 2** Choose **(All) Programs > SpeedTouch Wireless Monitor > Uninstall SpeedTouch Wireless Monitor**.
The Uninstall wizard starts.
- 3** Click **OK** to confirm you want to uninstall.
The Install Shield Wizard appears and notifies when the SpeedTouch Monitor is successfully uninstalled.
- 4** Click **Finish** to close the wizard.
After uninstalling the SpeedTouch™ Wireless Client Manager, you can restore the WZC.

4.6 Easy Setup Troubleshooting

Prerequisites

Before you run the Easy Setup on the embedded SpeedTouch™ pages, make sure that:

- ▶ The necessary connections are made.
- ▶ The SpeedTouch™ is turned on.
- ▶ Your host computer is configured as DHCP client or with a valid fixed IP address.



If you have any problems, you can give the host computer a fixed IP address in the same subnet as your SpeedTouch™ (If the SpeedTouch™ is in its default settings, that is an address between 192.168.1.1 and 192.168.1.253).

If you use fixed IP addresses, the SpeedTouch™ has to be configured as DNS server (default).

Supported Web browsers

Your Web browser must be able to run JavaScript. The following browsers are supported:

- ▶ Internet Explorer (5.0 and later)
- ▶ Netscape Navigator (4.7 and later)
- ▶ Mozilla Firefox (1.2 and later)
- ▶ Opera (5 and later)
- ▶ Konqueror (2.2 and later)

Disable proxy server

The Easy Setup only works if the proxy server is disabled or bypassed for local addresses. For more information, refer to the **Help** of your Web browser.

Proceed as follows to disable a proxy server in Internet Explorer:

- 1** In the Internet Explorer menu, choose **Tools > Internet Options**.
- 2** Click the **Connections** tab.
- 3** Click the **LAN settings...** button.
- 4** Clear the **Use proxy server** box and the **Use automatic script** box.



It is recommended to disable all other network connections on your computer first, except the one connecting to your SpeedTouch™.

Proceed as follows to disable a network connection:

- 1** In the Windows XP taskbar, click the **Start** button.
- 2** Choose **(All) Programs > Control Panel > (Network and Internet Connections >) Network Connections**.
- 3** Right-click the network interface icon you want to disable and choose **Disable**.

4.7 Reset to Factory Defaults

Resetting your SpeedTouch™

You might consider a reset to factory defaults as described below.



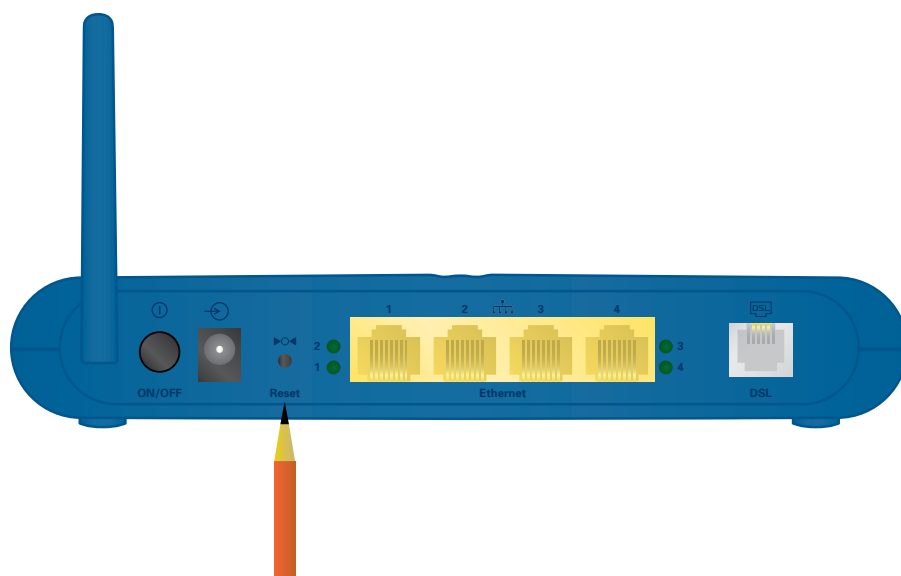
Be aware that a reset to factory defaults will revoke all configurational changes you made to the SpeedTouch™.

A reset to factory default settings deletes the configuration profile settings. Therefore, after the reset, a reconfiguration of your SpeedTouch™ will be needed.

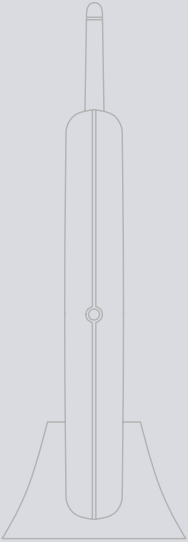
Reset to default configuration

Proceed as follows:

- 1 Make sure the SpeedTouch™ is turned on.
- 2 Use a pen or an unfolded paperclip to push the recessed reset button on the back panel. The reset button is marked with a red circle. Push it until the power LED lights red - this will take about 7 seconds.



- 3 Release the reset button.
- 4 The SpeedTouch™ restarts.



Need more help?

Additional help is available online at www.speedtouch.com